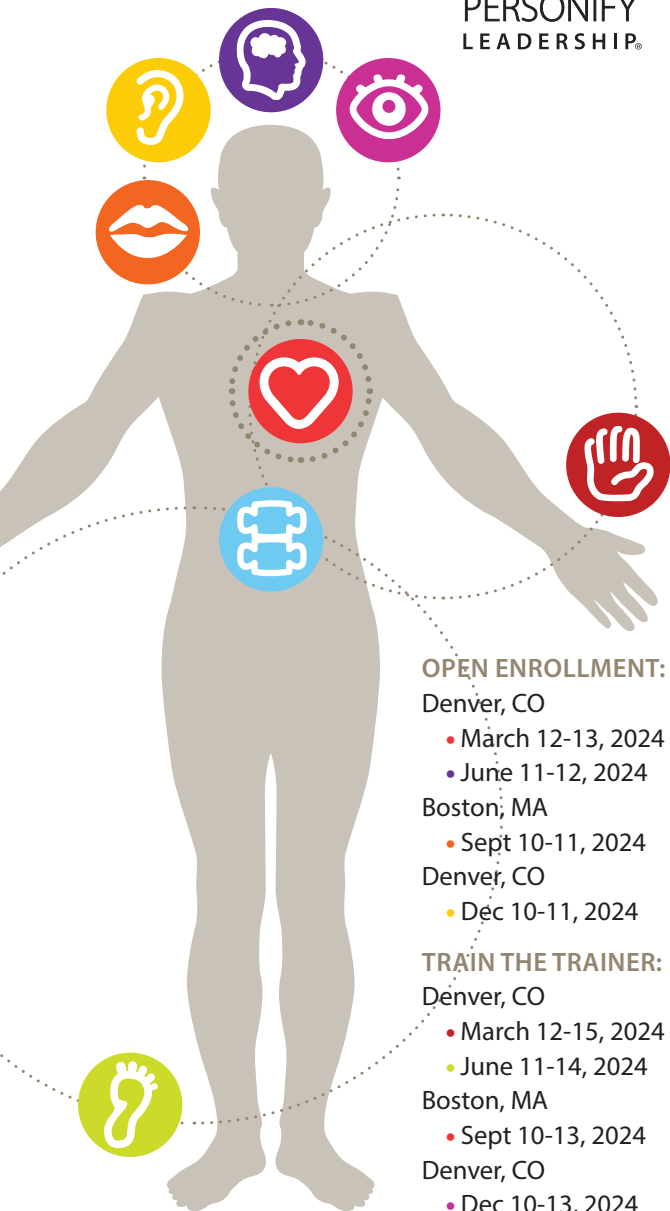


# 2024 Schedule and Pricing



**PERSONIFY**  
LEADERSHIP®



## OPEN ENROLLMENT:

Denver, CO

- March 12-13, 2024
- June 11-12, 2024

Boston, MA

- Sept 10-11, 2024

Denver, CO

- Dec 10-11, 2024

## TRAIN THE TRAINER:

Denver, CO

- March 12-15, 2024
- June 11-14, 2024

Boston, MA

- Sept 10-13, 2024

Denver, CO

- Dec 10-13, 2024



## CERTIFICATION IN PERSONIFY LEADERSHIP

Certification is a cost effective way to deliver Personify Leadership. Certification allows Facilitators to deliver the Personify Leadership program to any group at any time. Once certified, Facilitators are required to purchase one participant kit per participant.

### CERTIFICATION: \$5,500

#### Certification includes:

- Four-days of training
- Facilitator Kit full of all the experiential activities and materials needed to teach the class
- Two-year subscription to the Personify Leadership Learning Management System
- Also includes your first 10 Participant Kits  
*(If the course is delivered in the first three-months post-certification class.)*

PARTICIPANT ACTIVITY KITS	STANDARD PRICING Per Kit
1 – 99	\$298.00
100 – 249	\$278.00
250+	\$248.00

## BRING PERSONIFY LEADERSHIP TO YOUR ORGANIZATION

Implement a full two-day program led by one of our master facilitators at your organization. Maximum number of participants is 20. Minimum number of participants is 10.

### DIRECT ENGAGEMENT PRICING

**\$25,000.00**

This includes the 2-day course and all materials for 10-20 people. Additional participants are \$1,500 each.

## OPEN ENROLLMENT WORKSHOPS



Come experience Personify Leadership in one of our upcoming public open enrollment workshops. Whether you are a leader looking for additional tools for your professional development or a Talent Development leader evaluating current trends in leadership development, Personify Leadership open enrollment is a fit for you.

Join us for two-full days of hands-on learning. You'll leave with skills you can immediately apply back in the workplace while meeting mentors and cohorts from all over the world.

If you are considering certification, our open enrollment option allows you to see this program in action.

Registration is \$1,500 per person

Included:

2 full days of classroom learning

Participant Activity Kit

On-the-Job Aids

Everything DiSC Assessment Report

Subscription to Learning Management System

Coaching and Measurement Tools

Micro-Learning Tools post-program

Maximum number of participants is 20. Minimum number of participants is 10.

### STANDARD PRICING

**\$1,500.00**  
per person

### MODULE MATERIALS

Included in Registration





PERSONIFY  
LEADERSHIP®

1-800-495-5715

[www.personifyleadership.com](http://www.personifyleadership.com)